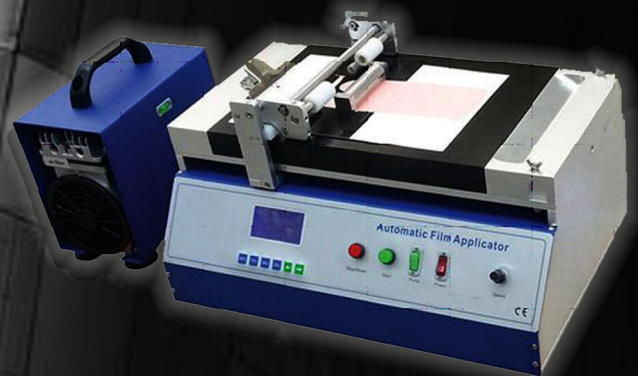


LR-6022

Automatic Film Applicator

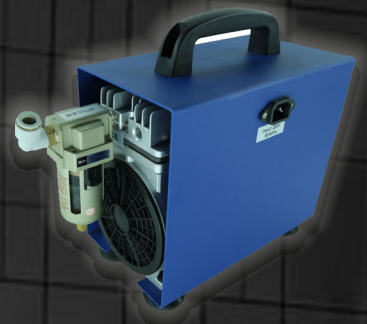
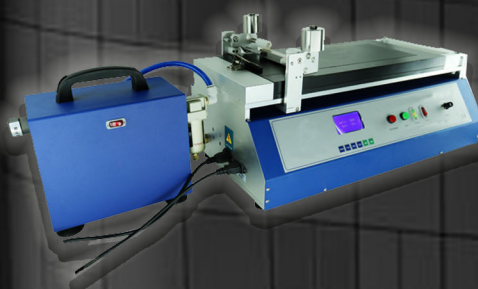
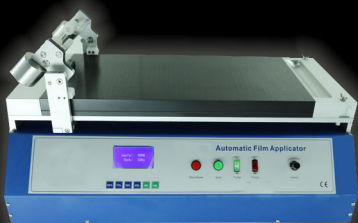
Use

Automatic Film Applicator enables experimental chemists to conveniently draw down precise coating film on the different substrates so as to reduce and eliminate errors caused by manual factors. Factors affecting the draw down are the shear rate and downward force applied to the applicator tool. The equipment sucks test paper smoothly on the vacuum bed. It greatly improves the reproducibility of paint film. It is the newest product, comparing the traditional products, it has:



- Adjustable variable speed 2~100mm/s
- High precision linear guide bar and direct current motor without carbon brush. Making the draw down speed more stable.
- Reasonable design bracket, easily and simply operated, and can add any load to apply on easily bent substrates.
- Special precise machining vacuum suction-gas plate with high smooth precision. Whole plate's flatness is less than 5 micron and high hardness-for better repeatability
- Optimal design for vacuum plate to ensure suction power is distributed uniformly.
- Can set the starting point freely, is suitable for different size substrates
- Four types application distance can be selected freely.
- Applicable to all Biugeds different type and size applicators and wire bars
- External vacuum pump eliminate all shake coming from traditional structure (put pump into machine)

Order information →	BGD 218/1	BGD 218/2	BGD 218/3
Technical specification ↓	Automatic Film Applicator	Automatic Film Applicator(Longer Type)	Automatic Film Applicator(Heat Type)
Substrate fixation mode	Vacuum adsorption		
Dimensions of coating platform	360 mm × 250 mm	490 × 250 mm	360 mm × 250 mm
Dimensions with suction holes	290 mm × 190 mm	410 × 190 mm	290 mm × 190 mm
Maximum coating stroke	250 mm	375 mm	250 mm
Coating speed	2~100 mm/s Infinitely variable speed		
Coated bracket load	500G (Can choose 2KG, 2.5KG load)		
Total power	370W		750W
Temperature adjustable range/temperature uniformity	---		RT+5°C~100°C/±5°C
Power	220V ; 50Hz		
Weight	40 KG	46 KG	42 KG
Overall dimensions (excluding vacuum pump)	500×345×340mm	635×345×340mm	500×345×340mm
(length × width × height)			



LINE : @ITOKIN2000.COM
 TEL : 02-9744354-6
 EMAIL : SALESITOKIN@GMAIL.COM